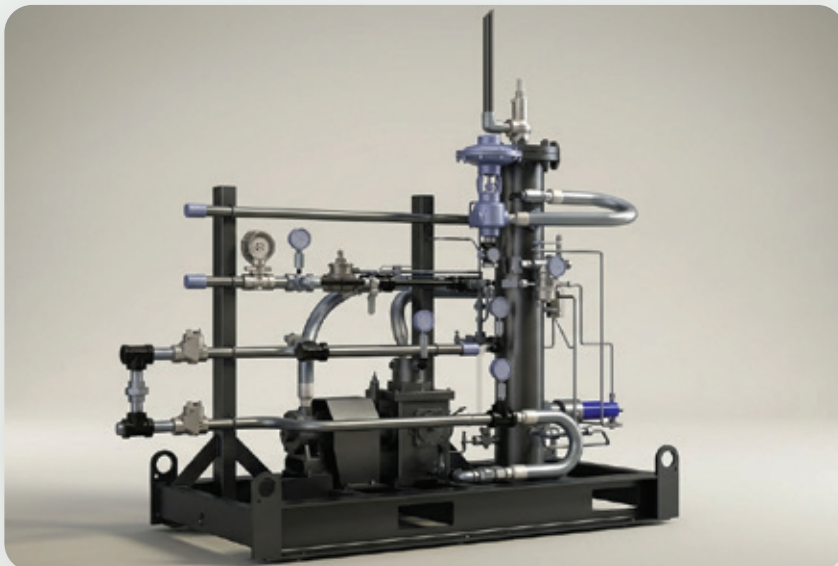


The CompressorHawk is a fugitive emissions capture system designed to enable proactive methane mitigation of reciprocating natural gas compressors. The CompressorHawk captures, compresses and routes methane to the sales line, enhancing environmental initiatives and avoiding direct revenue losses.

## BENEFITS OF CORDOVA METHANE CONTROLS' METHANE MITIGATION SOLUTION

- + One CompressorHawk Can Capture Emissions From Multiple Natural Gas Compressors
- + Captures Both Packing Rod And Blow-Down Emissions
- + Captures Vent Gas From Compressor Pneumatics
- + CompressorHawk Is Configured Based On Site Setup
  - Operates With No On-Site Power Required (Does Not Use Solar)
  - Can Be Configured To Utilize On-Site Power As Needed
- + Skid-Mounted System



### Problem =

#### SIGNIFICANT METHANE EMISSIONS FROM NG COMPRESSORS

Rod packing consists of flexible rings that form a seal around a compressor's piston rod to prevent high-pressure gas from escaping as the rod moves in and out of the compression chamber. With continual use, the packing deteriorates due to mechanical wear, thermal stress and impurities resulting from continuous pressure cycling and mechanical stress, which diminishes its sealing efficiency. As the seal deteriorates, pressurized methane gas leaks steadily into the atmosphere, commonly undetected in the absence of regular monitoring, with single units capable of emitting large quantities of methane per year.

### Solution = COMPRESSORHAWK

The CompressorHawk is designed to run alongside natural gas compressor units to capture, compress and route fugitive methane emissions to the sales line, preventing methane emissions and capturing lost revenue.